



**Focused on Translational Research**

---

**“Accelerating Product Development”**

CiC meeting Feb 13 2015  
Steve Ward

---

# Key AIMS of the LSTM Mission Statement



- To pursue research of international excellence and **relevance to user communities** which will contribute to the **improvement of health worldwide**
- To gain worldwide recognition as the premier institution in tropical medicine

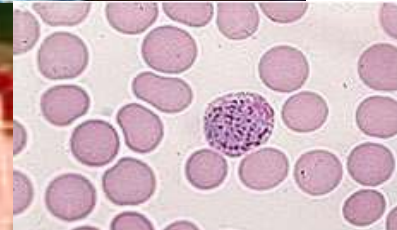
## Headlines:

- **Oldest global Health Institution in the World (1898)**
- **Holds the first Nobel prize for medicine in the UK**
- **£24m flagship new R&D building opened in 2008**
- **£200m of research grants for next 5 years**
- **400 staff**
- **Strong rating in REF assessment (impact)**
- **Strength in International Partnerships/Consortia**



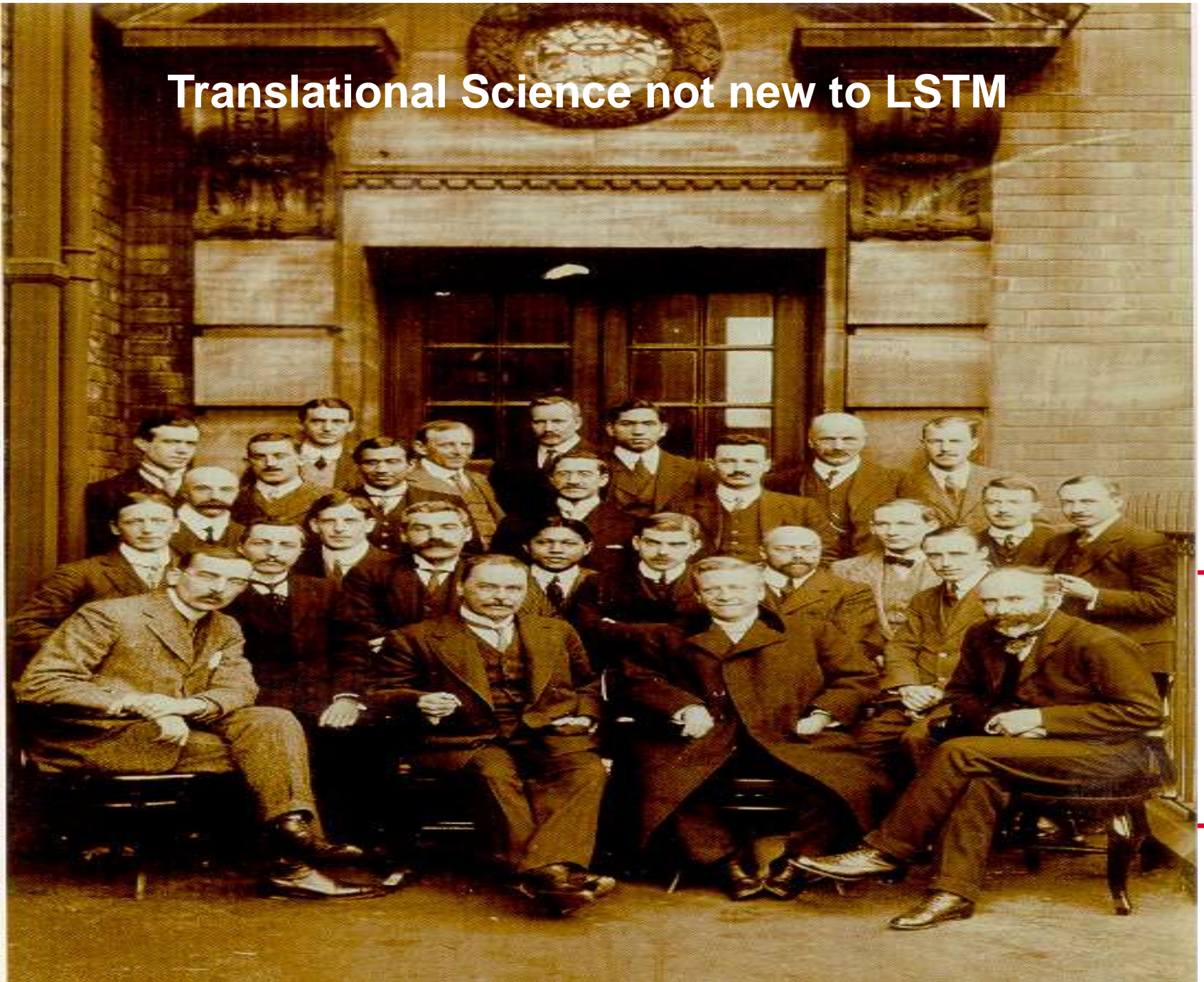
# LSTM : An Enterprise Comprising

- **Education and Teaching (Post graduate)**
- **Research and Development**
  - Infectious disease
  - Vector control
  - Drug discovery through to phase 4 pharmacovigilance
  - Public health & health system strengthening
  - Overseas R&D Centres
- **Trading entities to drive research funds**
  - Patents Management
  - International Travel Health Services
  - International Consultancy
- **International Programme Management**
  - Vector control (IVCC)





# Translational Science not new to LSTM

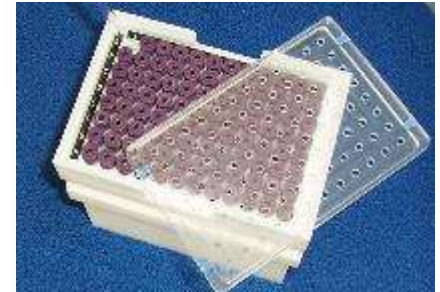


## A long history of drug discovery and development

- ❑ **1905 Atoxyl the first treatment for African sleeping sickness (HAT)**
- ❑ **1921 First clinical trial of Suramin for HAT**
- ❑ **1939 Demonstrated the clinical efficacy of diamidines in HAT**
- ❑ **1941 Demonstrated the prophylactic potential of 8-aminoquinoline antimalarials**
- ❑ **1945 First clinical trials with proguanil (paludrine)**



# The Facilities - CTID



# Global connections





- **Expand relevant “product oriented” research**
- **Increase integration between basic research, translational research and implementation and policy research**
- **To increase International profile through participation**
- **Build sustainability into programmes**



The Research Centre for Drugs and Diagnostics at the Liverpool School of Tropical Medicine comprises an experienced multi-disciplinary group of experts working together to develop new drugs and diagnostics.

The group regularly works with industry (SMEs and larger organisations), academia and other NGOs to discover, develop and deliver novel therapies and diagnostics against a range of pathogens.

The Centre offers flexible models of collaboration from open access to commercial service provision. Located at the [Liverpool School of Tropical Medicine](#), the Centre has access to state-of-the-art laboratories and equipment.

## Latest News



Step forward in the fight against malaria  
*07 January 2015*



Journal special issue focusses on "Advances in Diagnostics for Parasitic Diseases"  
*02 December 2014*



Reminder systems to improve patient adherence to tuberculosis clinic appointments for diagnosis and treatment  
*19 November 2014*

**Malaria**

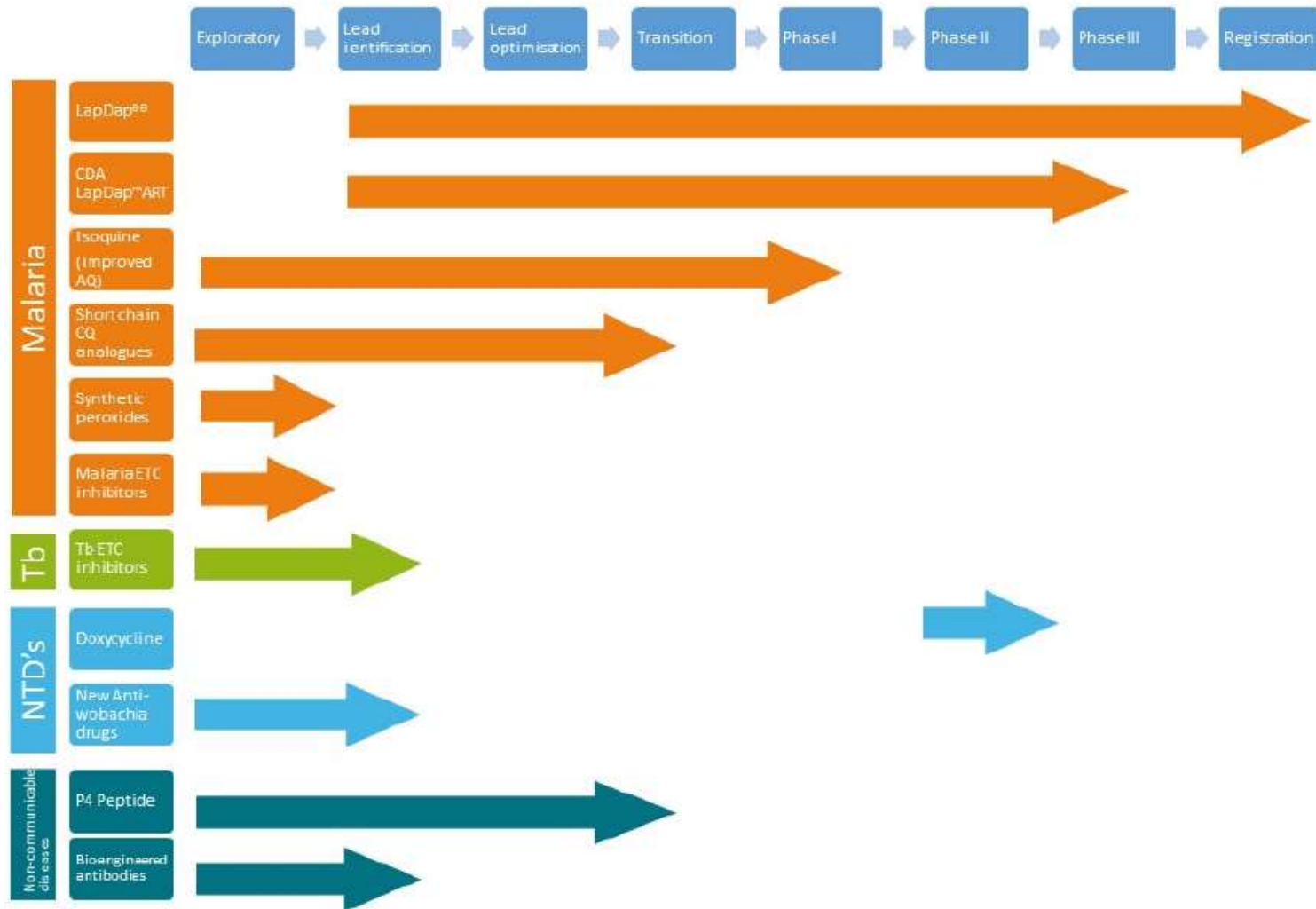
**Neglected  
tropical  
diseases**

**Tuberculosis**

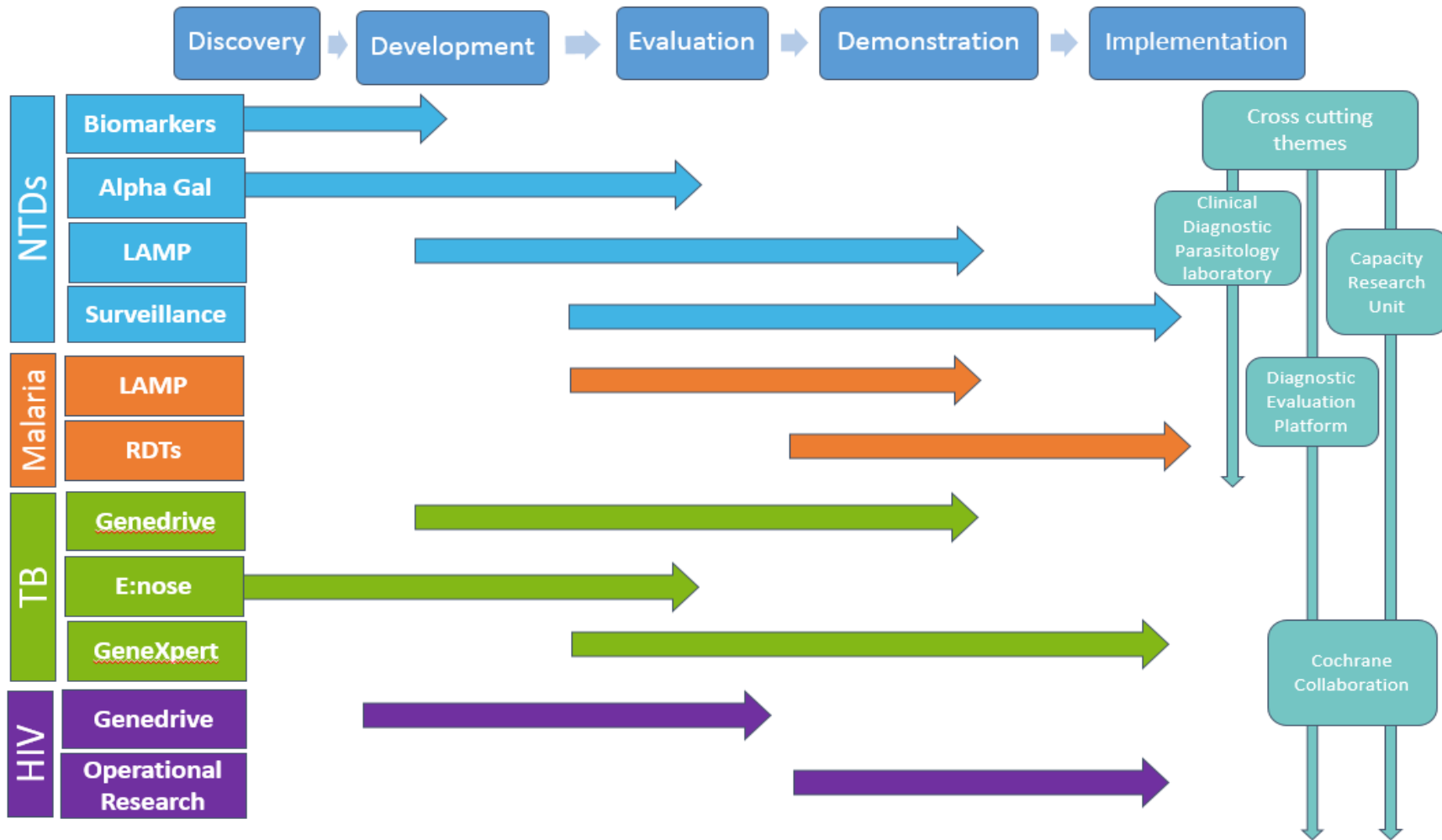
**Non  
communicable  
diseases**

**HIV**

# Therapeutics



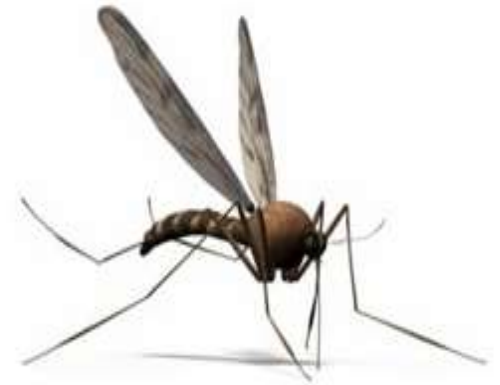
# Diagnostics





## The Liverpool Insect Testing Establishment

The centre of excellence for insect control product testing, providing quality services that help improve the health of millions of people across the globe.



# Current Industry Collaborations



# Delivered by Partnership: The role of academia

- **Basic and applied pathogen specific research exists within**
  - Academia
  - The Armed Services
- **Core Technologies**
  - Academia
  - SMEs/Industry
- **Screening and clinical experience exists within**
  - Academia
  - Tropical Countries
- **Public health awareness exists within**
  - Academia
  - Tropical Countries

**but Private Sector has the rest!**

# What the consortium can provide to a partnership



- **Access to partnership funding**
- **Ability to establish, manage and deliver £ multi-million international consortia based programmes**
- **Access to core technologies – analytics, molecular biology, cell biology etc.**
- **Access to pathogens and appropriate containment facilities**
- **Clinical trials expertise (drugs, diagnostics and insecticides) UK and overseas**
- **Track record and credibility**



**“to accelerate the transition from discovery science to the early stages of therapeutic/biomarker development”**

- **2012 - 13 £250K (LSTM) 6/11 projects funded**
- **2013 - 14 £500K (LSTM, LSHTM, PHE, OXFORD) 11/23 projects**
- **2015 - 16 £500K (LSTM, LSHTM, PHE, OXFORD)**

- **Vibrant consortium**
- **Expertise in Therapeutics, Diagnostics, Vaccines**
- **Critical mass of projects in Malaria, TB**
- **Investments have delivered 1 DPFS award, 2 Industry Partnership**

## Things to consider

- **How can we expand industry involvement ?**
- **How do we build sustainability into the consortium ?**
- **How do we expand into other relevant disease areas ?**
- **Do we need a more strategic focus for next phase of projects ?**

